

Customer :  
Project Name :  
Project No. :  
Revision No. :

---

# **SPECIFICATION for INDUCTION MOTOR**



0		For Bidding			
No.	DATE	DESCRIPTION	PREPARED BY	CHECKED BY	APPROVED BY

# AC INDUCTION MOTOR DATA SHEET

Model No.or RFQ No.		Item No.		Rev. No. [      ]			
Project Name		Project No.		Quantity      sets			
<b>GENERAL SPECIFICATION</b>			<b>PERFORMANCE DATA</b>				
Frame Size	71M		Rated Output	0.4 kW      0.5 HP			
Type	HLP-0.4/4		Number of Poles	4			
Enclosure(Protection)	Totally Enclosed / IP55		Rotor Type	Squirrel Cage			
Method of Cooling	IC411(FC)		Starting Method*	<input checked="" type="checkbox"/> D.O.L <input type="checkbox"/> Y-Δ			
Rated Frequency	60 Hz		Rated Voltage	440 V			
Number of Phases	3		Current	Full Load	1.0 A		
Insulation Class	<input checked="" type="checkbox"/> F <input type="checkbox"/> B <input type="checkbox"/> H		Locked-rotor**	580 %			
Temp. Rise at full load (by resistance method)			Efficiency				
at 1.0 S.F      80 deg. C							
Motor Location	<input checked="" type="checkbox"/> Indoor <input type="checkbox"/> Outdoor						
Altitude	Less than 1000 meter		100% Load      78.2 %				
Relative Humidity	Less than 80 %		Power Factor(p.u)				
Ambient Temp.	40 deg. C (Max.)						
Duty Type	Continuous (S1)		100% Load      0.685				
Service Factor	1.15		Speed at Full Load      1715 r.p.m				
Mounting	B3		Torque				
Bearing	Type	Anti-Friction					
	DE/N-DE	6203ZZC3 / 6202ZZC3	Full Load	0.2 kg·m      2.2			
	Lubricant	Grease	Locked-rotor**	300 %      0.7 kg·m			
External Thrust	Not applicable		Breakdown**	230 %      0.5 kg·m			
Coupling Method	<input checked="" type="checkbox"/> Direct <input type="checkbox"/> V-Belt		Moment of Inertia (J)				
Shaft Extension	<input checked="" type="checkbox"/> Single <input type="checkbox"/> Double		Load(Max.)      0.341 kg·m <sup>2</sup>				
Terminal	Main	<input checked="" type="checkbox"/> Aluminum <input type="checkbox"/> Cast Iron	Motor      0.001 kg·m <sup>2</sup>				
Box	Aux.	<input type="checkbox"/> Yes <input type="checkbox"/> No	Sound Pressure Level (No-load & mean value at 1m from motor)				
	Location	Refer to Outline Drawing	56 dB(A)				
Application			Vibration      1.6 mm/sec (peak)				
Area classification	Non-Hazardous		Permissible number of				
Type of Ex-Protection	Not applicable		consecutive starts				
Applicable Standard	KS, IEC, NEMA MG1 Part30(Vpeak)		Cold      20 times				
			Hot      15 times				
			Paint	Munsell No.	PHANTONE 279C		
<b>ACCESSORIES</b>			<b>SUBMITTAL DRAWING</b>				
			Outline Dimension Drawing \ Motor Weight(Approx.)				
			B3      LM-A1071B3P3V01      15 kg				
			<b>REMARK</b>				
			*. Premium efficiency(IE3) acc. to KS C 4202				
			*. SSEN Series				
			*. For use on PWM VFD 10:1VT,3:1CT@1.0S.F&F Temp.rise				
<b>SPARE PARTS</b>			<div style="border: 2px solid red; padding: 10px; text-align: center; font-size: 2em; color: red;">FOR BIDDING</div>				
			Date	DSND	CHKD	CHKD	APPD
			2021-04-21				

Type : HLP-0.4/4

Full Load Torque : 0.2 kg.m

Load moment of Inertia (J) : - kg.m<sup>2</sup>

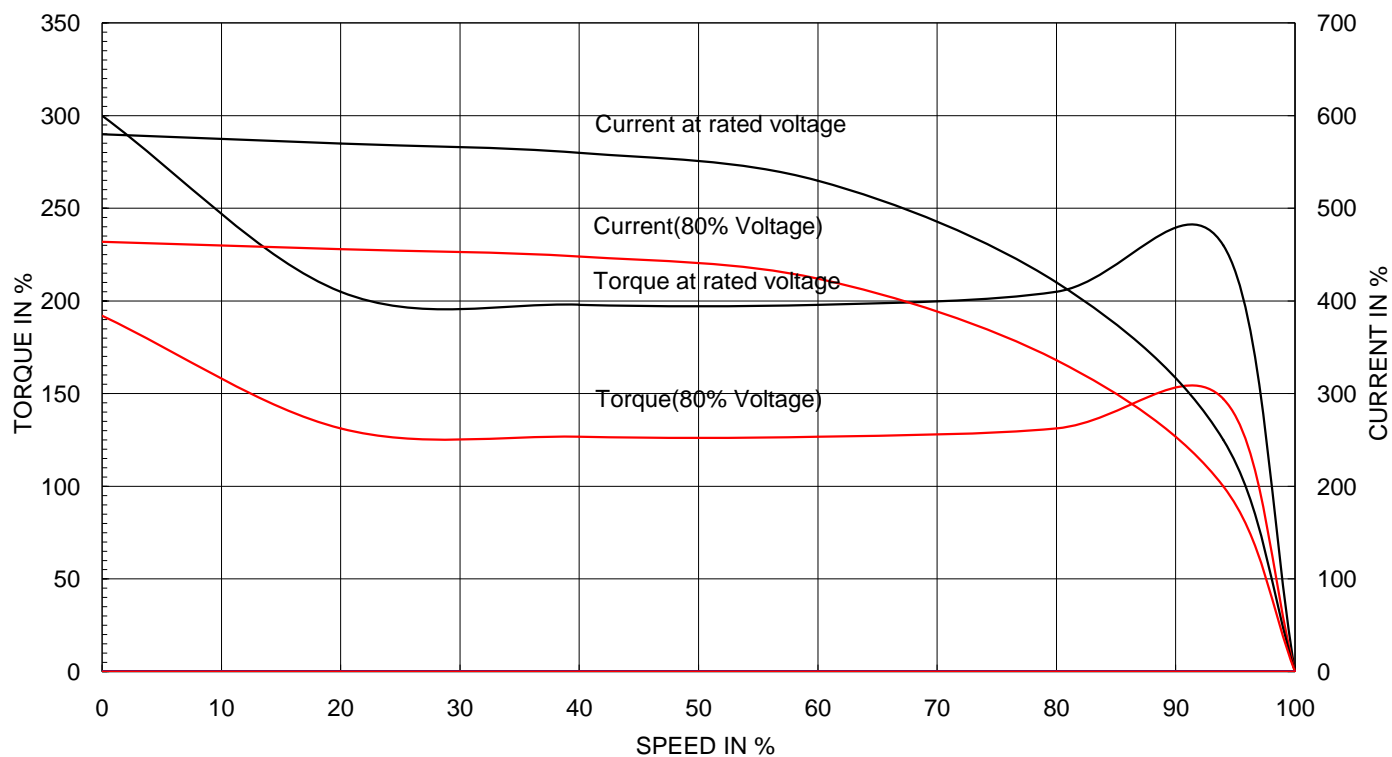
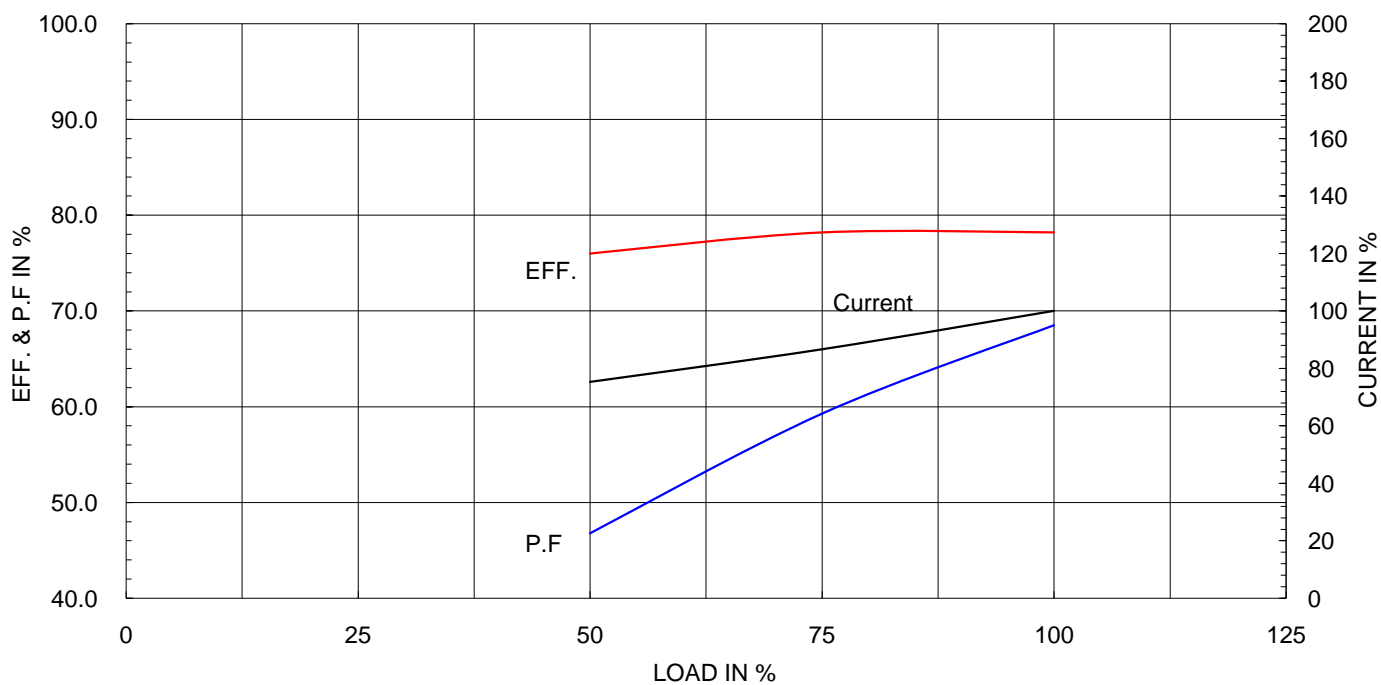
Motor moment of Inertia (J) : 0.001 kg.m<sup>2</sup>

0.4 kW 4 P 60 Hz

Speed at Full Load : 1715 RPM

Rated Voltage 440

Full Load Current 1.0A

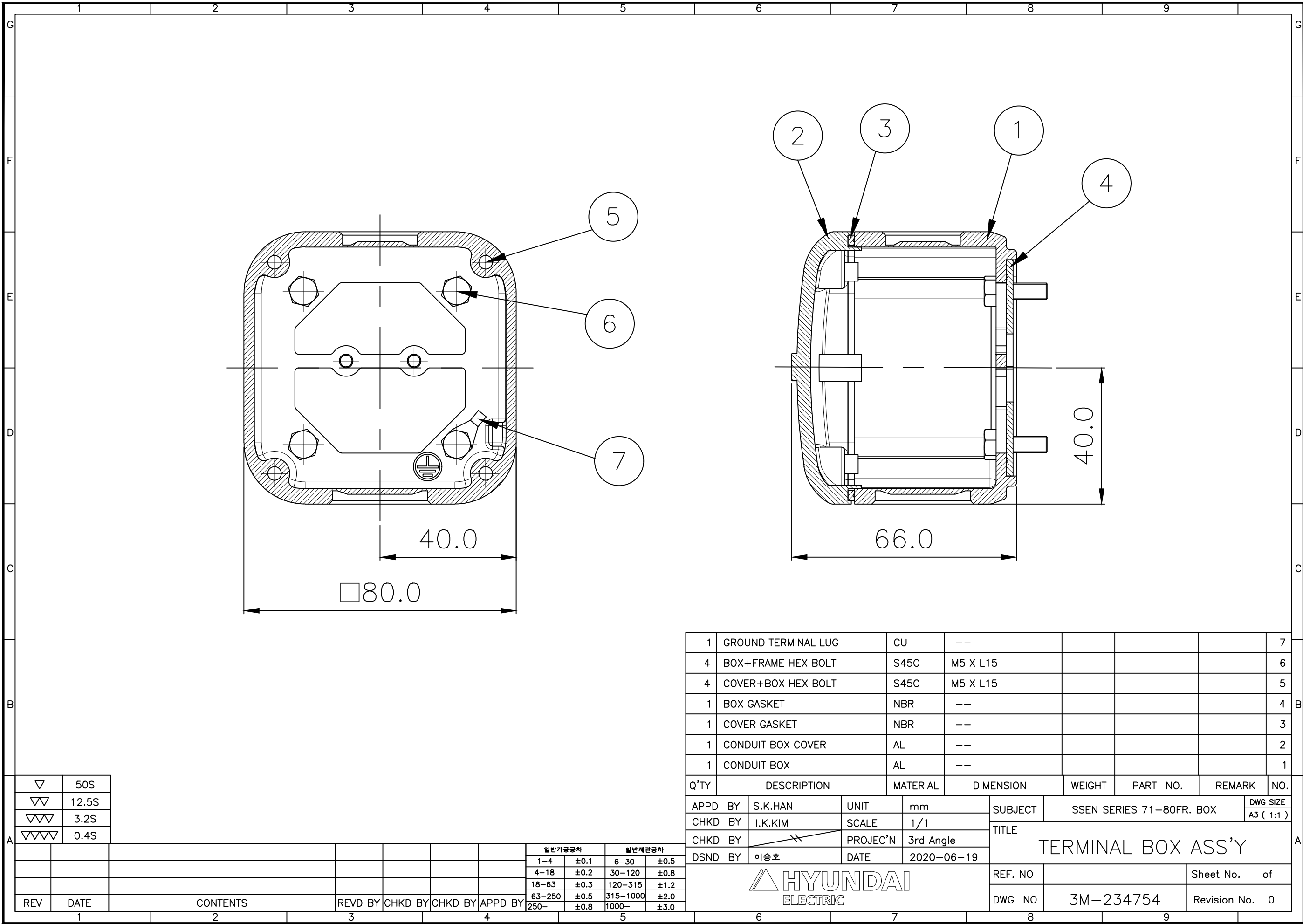
**SPEED VS TORQUE & CURRENT CURVE**

**OUTPUT VS EFF., P.F & CURRENT CURVE**




THIS DRAWING IS PROPRIETARY TO HYUNDAI ELECTRIC. NO PART OF THIS DRAWING  
MAYBE REPRODUCED WITHOUT THE PERMISSION OF HYUNDAI ELECTRIC.


본 도면은 현대일렉트릭(주) 재산이므로  
허가없이 복사할 수 없음 (취급주의)

HYUNDAI  
ELECTRIC



▽	50S
▽▽	12.5S
▽▽▽	3.2S
▽▽▽▽	0.4S

REV	DATE	CONTENTS	REVD BY	CHKD BY	CHKD BY	APPD BY	일반기공차	일반재관공차
							1-4 ±0.1 6-30 ±0.5	
							4-18 ±0.2 30-120 ±0.8	
							18-63 ±0.3 120-315 ±1.2	
							63-250 ±0.5 315-1000 ±2.0	
							250- ±0.8 1000- ±3.0	

1	GROUND TERMINAL LUG	CU	--					7
4	BOX+FRAME HEX BOLT	S45C	M5 X L15					6
4	COVER+BOX HEX BOLT	S45C	M5 X L15					5
1	BOX GASKET	NBR	--					4
1	COVER GASKET	NBR	--					3
1	CONDUIT BOX COVER	AL	--					2
1	CONDUIT BOX	AL	--					1
Q'TY	DESCRIPTION	MATERIAL	DIMENSION	WEIGHT	PART NO.	REMARK	NO.	
APPD BY	S.K.HAN	UNIT	mm	SUBJECT	SSEN SERIES 71-80FR. BOX		DWG SIZE	
CHKD BY	I.K.KIM	SCALE	1/1	TITLE TERMINAL BOX ASS'Y				A3 ( 1:1 )
CHKD BY		PROJEC'N	3rd Angle					
DSND BY	이승호	DATE	2020-06-19					
 HYUNDAI ELECTRIC				REF. NO			Sheet No.	of
				DWG NO	3M-234754		Revision No.	0
6		7		8		9		

HYUNDAI  
ELECTRIC